

CRUISE & RAIL

A whole new way to travel with Uniworld



We've partnered with two different five-star luxury brands to craft extraordinary journeys of river cruising, land and train travel. As a pre- or post-cruise addition to your time sailing in all-inclusive luxury with Uniworld, you'll embark on one of the best private train experiences the world has to offer.



THE PERFECT PAIRING

Everchanging views, visiting a variety of destinations in one trip without having to pack up every time and having everything taken care of for you—all benefits of river cruising, and all reasons to love train travel too.



OUR LUXURY PARTNERS

We're thrilled to partner with *Golden Eagle* for Cruise & Rail journeys that bring the Uniworld standard of luxury to the private train experience. And of course, it's all-inclusive.



DINING

Feast on delicious cuisine representing a variety of local and international flavors, served with fine wines onboard. And occasionally head into town for unique included dining experiences.



ACCOMMODATIONS

Pair your boutique floating hotel with a luxurious gliding hotel, where your en-suite cabin is an elegant private compartment during the day and transforms into a comfortable bedroom for the evening.

ENCHANTING DANUBE & THE CASTLES OF TRANSYLVANIA

12 Days • Passau to Budapest (or Budapest to Passau) • *S.S. Maria Theresa & Golden Eagle Danube Express*



Transylvania, Romania



Experience the highlights of Central and Eastern Europe, then lend your European adventure a layer of mystique on a luxury private train through the country that inspired the myth of Count Dracula. Amongst spectacular scenery and fascinating local cultures, you'll trace the legend back to Romania's infamous Vlad the Impaler. Visit his castle, as well as the real-world castle upon which Bram Stoker based his eerie depiction of Dracula's home.

DAY	PORT	FEATURE
1	Passau	Transfer from Munich airport and embark
2	Passau	Hike along the Ilz River for breathtaking views of the countryside
3	Linz (Salzburg)	Sample pear and apple ciders over an orchard lunch
4	Melk, Dürnstein	Visit the beautiful, bright yellow Melk Abbey and its famous library
5	Vienna	Enjoy a crowd-free viewing of the Vienna Art History Museum's legendary art
6	Vienna, Bratislava	<i>Let's Go</i> hike to the Castle of Bratislava
7	Budapest	Taste some local treats on a walk through Budapest
8	Budapest, Lajosmizse, Kecskemet	Disembark the ship and settle into your cabin as the train heads to Lajosmizse
9	Sibiu, Sighișoara	Arrive in the 13th-century town of Sibiu, Romania
10	Sinaia, Brașov, Rasnov, Bran	Visit Bran Castle, popularly known as Dracula's Castle
11	Cluj-Napoca, Budapest	Tour Cluj-Napoca in the morning before disembarking
12	Budapest	Return home

UNIQUELY UNIWORLD

Witness a spectacular Puszta horse show in Lajosmizse, Hungary.

Visit the rumored birthplace of Vlad the Impaler, as well as Bran Castle, which inspired the home of his fictional counterpart, Count Dracula.

Explore Budapest with a local guide, sampling some of the city's most popular treats along the way.

Includes at least one **MTM Experience**.



WE SUPPORT THE SUSTAINABLE DEVELOPMENT GOALS



Budapest, Hungary



Golden Eagle train in Hungary

SNAPSHOT

- | | |
|---|-------------------------|
| 7 Nights Cruising | 3 Nights by Train |
| 1 Night Touring | 23 Included Excursions |
| 1 Private Experience | 5 UNESCO Heritage Sites |
| 32 Meals (including 1 Welcome Dinner and 1 Farewell Dinner) | |

DEPARTURES

October 10-22, 2023 (Budapest-Passau)
October 8-19, 2023 (Passau-Budapest)

OPTIONAL EXTENSION

Prague (3-Day, pre-cruise/tour)

CRUISE & RAIL: CASTLES OF TRANSYLVANIA & THE ENCHANTING DANUBE

13 Days, Budapest to Passau

Explore Transylvania and the Danube on an alternate 13-day itinerary, beginning with an extra night in Budapest, where you'll stay at a luxurious hotel in the city center before embarking on the rail portion of your journey.

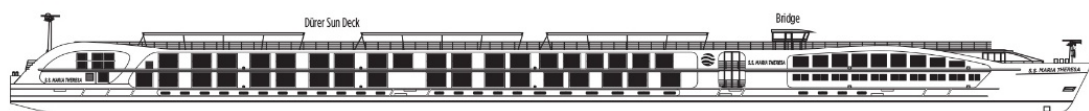
Deck Plan for the S.S. Maria Theresa

"Regal in its opulent 18th-century decor, a floating homage to the former Austrian empress....Besides indulgent dining and an elegant atmosphere, this is one of the prettiest ships out there." - Cruise Critic editors

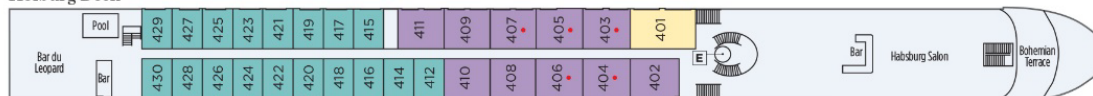
One of Europe's most beloved and longest reigning monarchs, the great Habsburg ruler Maria Theresa, was so extraordinary that we built an entire Super Ship in her honor. Named "Best New River Ship" by Cruise Critic editors her maiden season, the *S.S. Maria Theresa* features ultra-luxurious accommodations and an array of thoughtful personal touches, ensuring a truly indulgent and unforgettable voyage along the Danube and Main Rivers.

Staterooms and suites on the Hofburg Deck have open-air balconies that, with the touch of a button, will raise the glass to create a completely enclosed conservatory. Designated suites provide triple-accommodation options. Adjoining staterooms are available; please inquire at time of booking.

S.S. MARIA THERESA



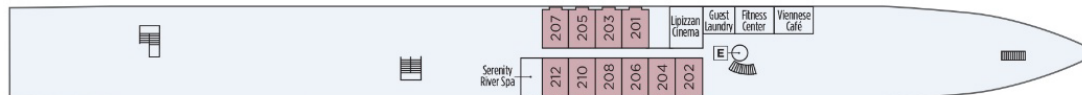
Hofburg Deck



Schönbrunn Deck



Bavarian Deck

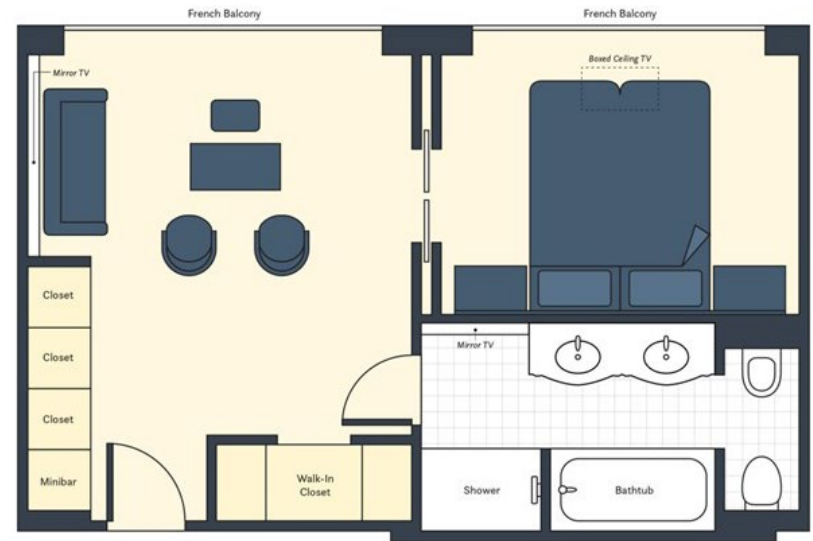


Grand Suite Suite Deluxe Balcony French Balcony Classic

E Elevator • Triple accommodation available

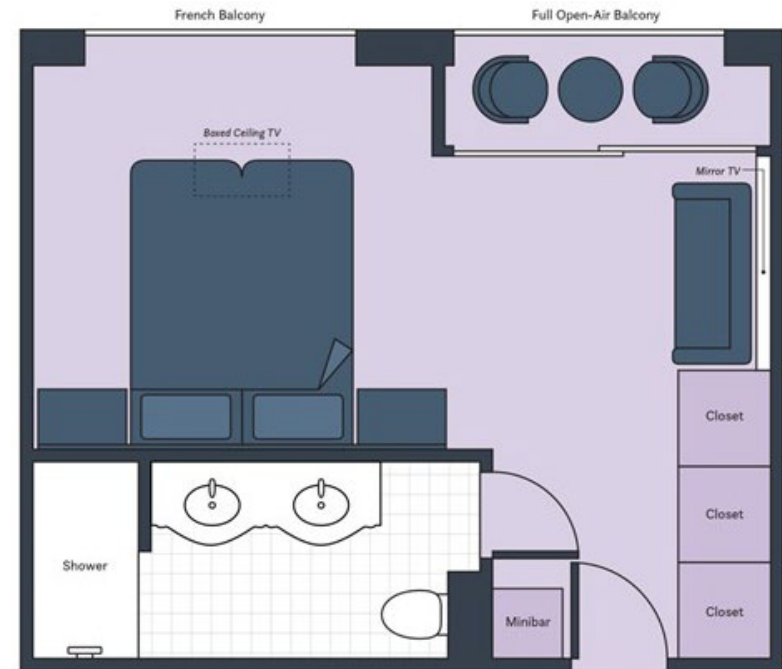
Grand Suite:

- Lavishly appointed riverview stateroom (410 sq ft or 38 sq m) with a French balcony;
- Handcrafted Savoir® Beds of England, walk-in closet, hair dryer, safe, individual thermostat, flat-screen TV with infotainment center and satellite, and bottled water;
- The Grand Suite offers extra benefits, including a separate spacious living room, bathroom with a separate rain shower and tub, and secluded toilet and bidet area;
- Marble bathroom includes Asprey bath and body products, plush towels, towel warmers, backlit magnifying mirror, heated mirrors, comfortable bathrobes and slippers;
- Additional amenities and service include: in-suite butler service; packing and unpacking assistance; in-room breakfast; daily fruit and cookie plate, and an elegant evening snack; Nespresso coffee machine and fine teas; fully stocked mini bar; bottle of wine upon arrival; shoe shine; and free laundry service.



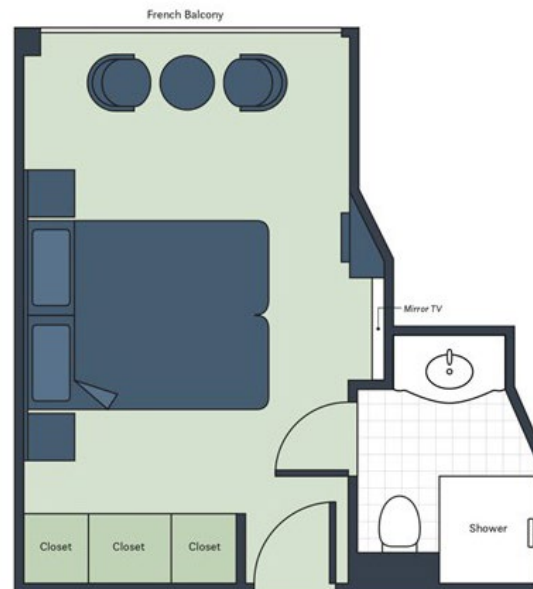
Suite:

- Lavishly appointed riverview stateroom (305 sq ft - 28.3 sq m) with an open-air balcony;
- Handcrafted Savoir® Beds of England, built-in closet, hair dryer, safe, individual thermostat, flat-screen TV with infotainment center and satellite;
- Marble bathroom with Asprey bath and body products, plush towels, towel warmer, comfortable bathrobes and slippers, heated mirror and backlit magnifying mirror;
- Additional amenities and service include: in-suite butler service; packing and unpacking assistance; in-room breakfast; daily fruit and cookie plate, and an elegant evening snack; Nespresso coffee machine and fine teas; fully stocked mini bar; bottle of wine upon arrival; shoe shine; and free laundry service.



Deluxe or French Balcony:

- Lavishly appointed riverview stateroom (194 sq ft or 18 sq m). Deluxe Balconies have an open-air balcony; French balconies have, unsurprisingly, French balconies;
- Handcrafted Savoir® Beds of England, built-in closet, hair dryer, safe, individual thermostat, flat-screen TV with infotainment center and satellite;
- Marble bathroom with Asprey bath and body products, plush towels, towel warmer, comfortable bathrobes and slippers, heated mirror and backlit magnifying mirror.



Classic:

- Lavishly appointed riverview stateroom (162 sq ft or 15 sq m);
- Handcrafted Savoir® Beds of England, built-in closet, hair dryer, safe, individual thermostat, flat-screen TV with infotainment center and satellite;
- Marble bathroom with Asprey bath and body products, plush towels, towel warmer, comfortable bathrobes and slippers, heated mirror and backlit magnifying mirror.



2023 Pricing for Castles of Transylvania and the Enchanting Danube:

From \$18,798 per person for Grand Suite

From \$15,598 for Suite

From \$13,298 for Deluxe Balcony

From \$12,798 for French Balcony

From \$11,798 for Classic

2023 Dates:

October 8-19 (Passau-Budapest)

October 10-22 (Budapest-Passau)

- Guests in Grand Suites and Suites on the ship will be assigned Superior Deluxe Cabins on the *Golden Eagle Danube Express*.
- Pricing is subject to change.
- Prices exclude additional port charges of \$210 per person.
- Please contact us for single occupancy pricing.

Contact us at tourdesk@irtsociety.com for availability, and to book.

